

Seniors Lab Program

A TCS care and wellness solution for the elderly

About TCS Seniors Lab



The TCS Seniors Lab is a program which aims to leverage technology for the betterment and inclusivity for the aging community.



This program allows the elderly to live and age with confidence well into their golden years.



The program originated in Singapore with ShineSeniors - Smart Homes and Intelligent Neighbours to Enable Seniors - a research initiative by the SMU-TCS iCity Lab, a joint venture between Singapore Management University and Tata Consultancy Services.



With TCS' ongoing efforts towards creating an integrated care platform, the TCS Seniors Lab program or TCS SLAB was established.

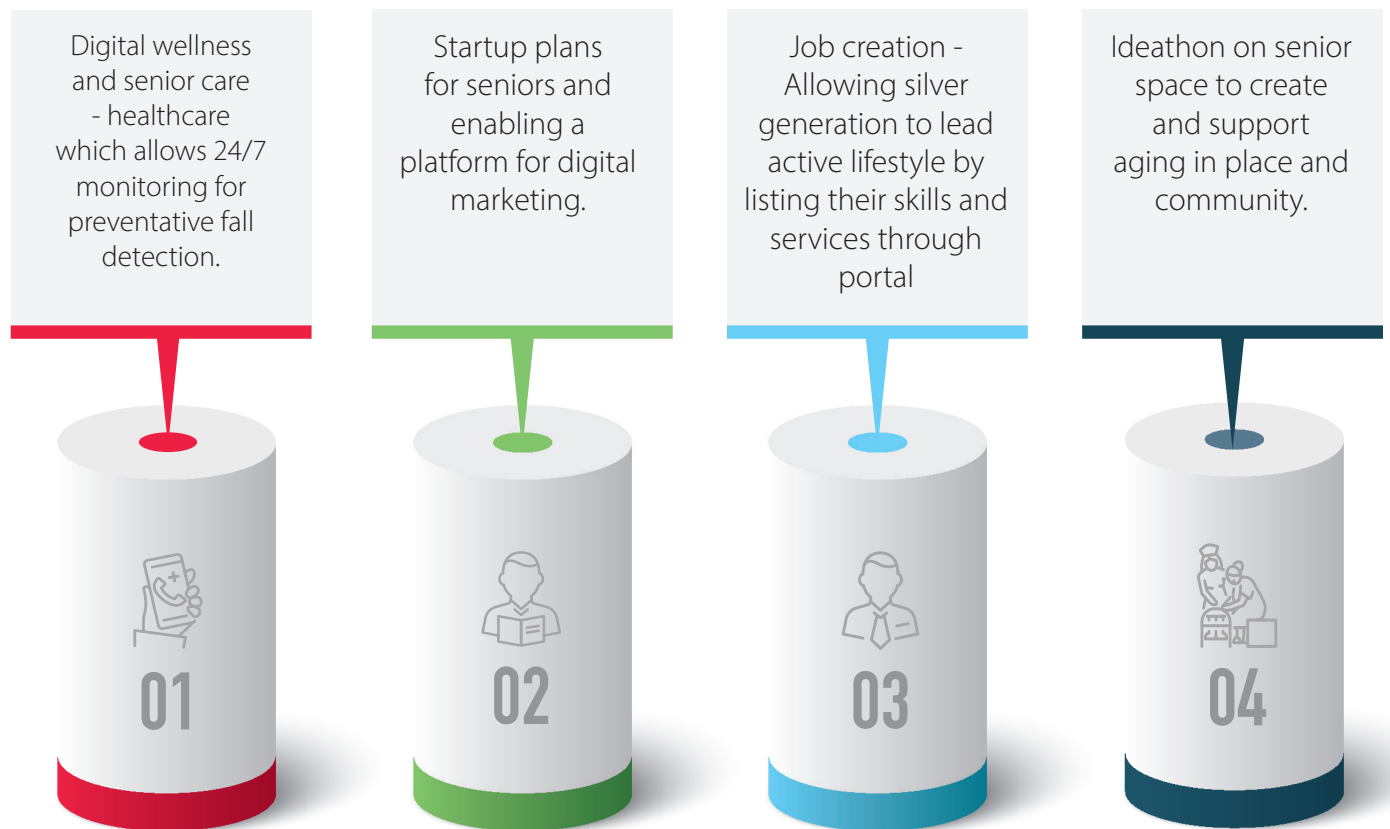


TCS SLAB was created to address challenges in healthcare cost and in creating an inclusive community for the silver generation to age with confidence and maintain an independent lifestyle.

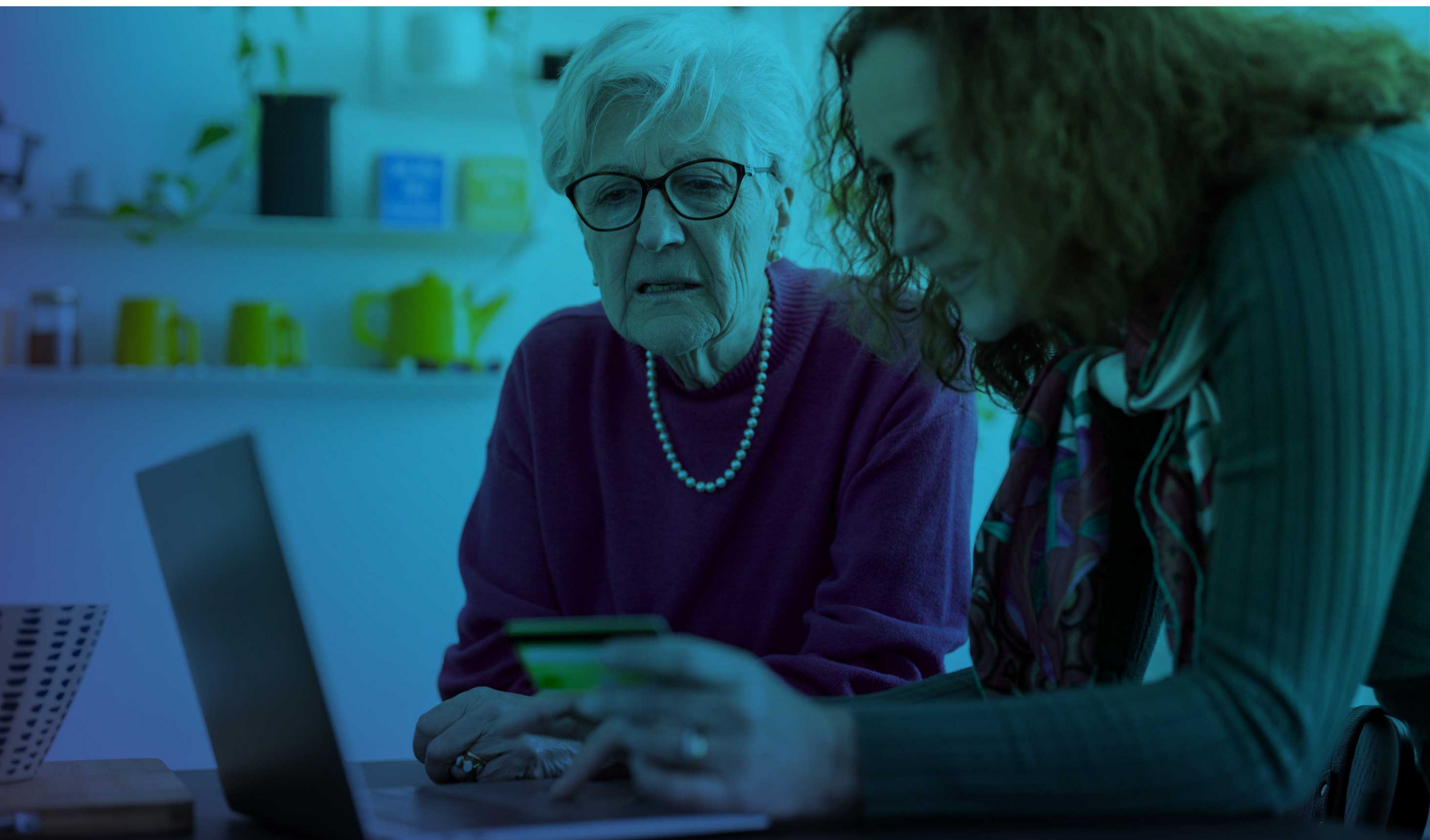


With TCS SLAB, we can help the elderly live safe, comfortable, and independent lives.

4 pillars of TCS Seniors Lab



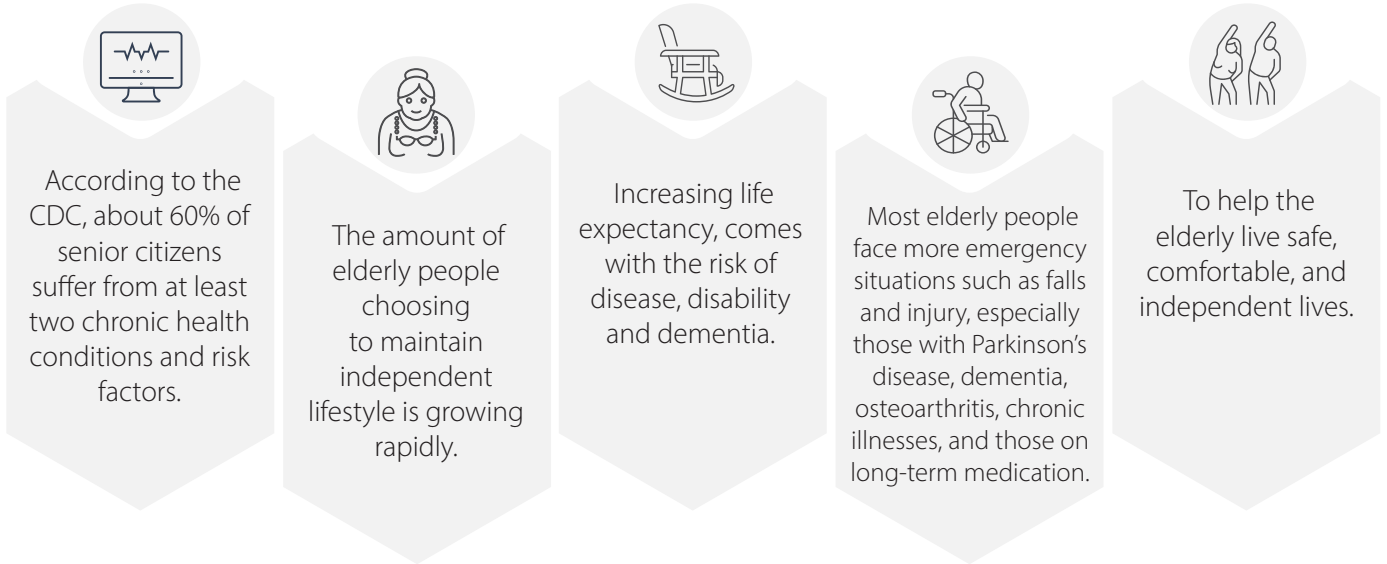
All these are offered through partnerships with NGOs and healthcare providers to build a more inclusive environment and allow the silver generation to age with care and confidence.



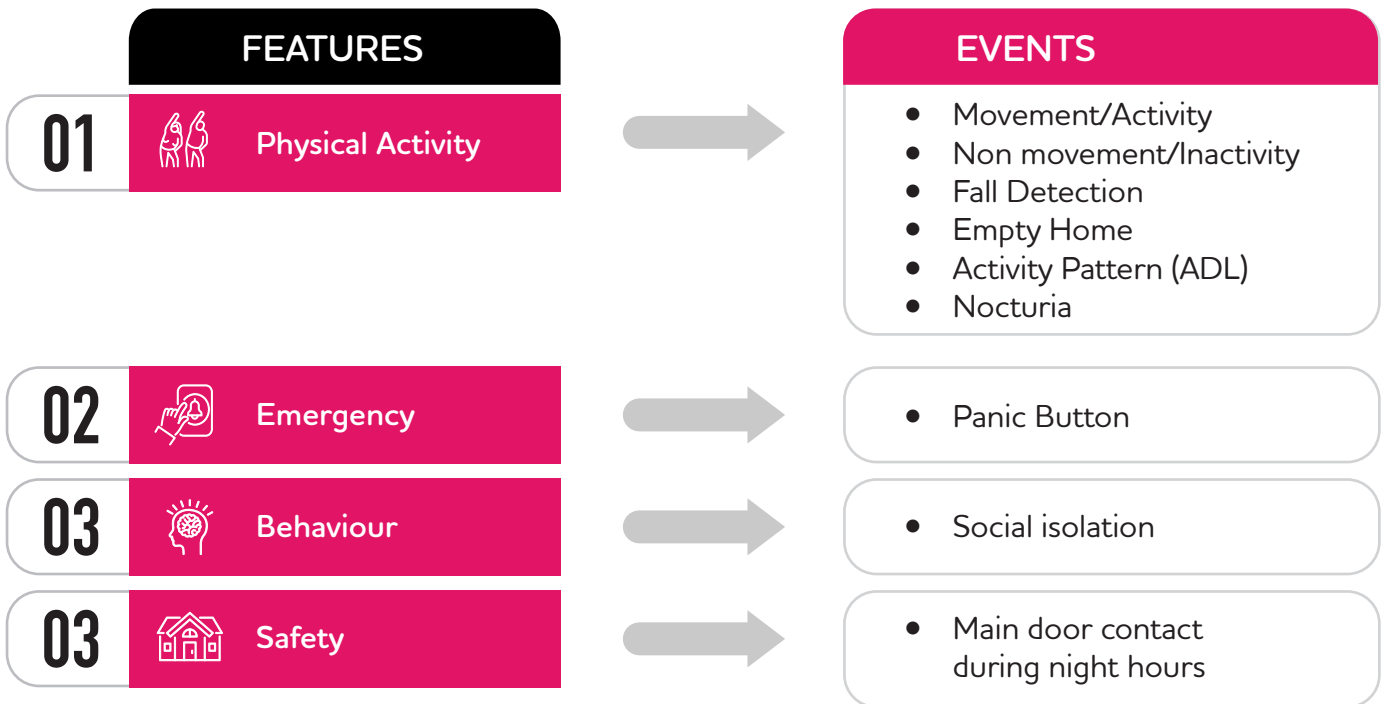
Senior care solution

Through IoT enabled sensors, the solution is designed to digitally report movement, activity, alerts for falls, social isolation and basic medically relevant parameters, while being non-intrusive and maintaining complete privacy.

Why is this needed?

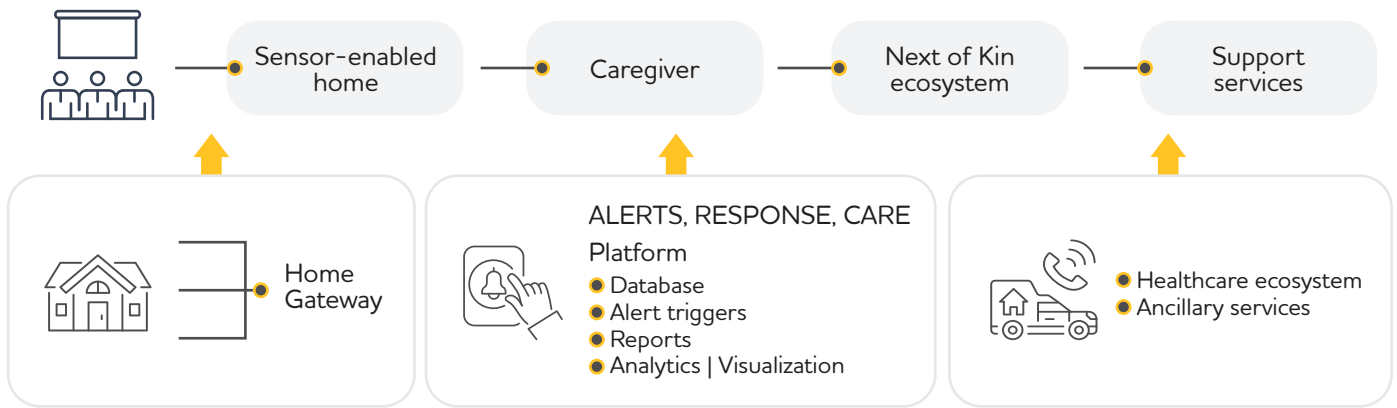


Scope of the solution



- Newer solution features can track Cardiopulmonary function- Heart rate and respiration rate
- Extended services include- emergency linkages & concierge services for the elderly such as ambulance service, companion, attendant, shopping, groceries, and bill payments.

TCS Seniors Lab platform & services integration



Key Attributes

- IOT sensor/radar enabled
- Includes: Movement/Non movement, activity, falls & CP function
- Customizable
- SLA and metric based
- Wearable and device
- integration capability
- Front end applications:
 - Carer
 - Resident
 - Service providers

How does it work?



The program enrolls seniors and presents mobile and desktop applications for generating alerts to caregivers and family members/next of kin of the enrolled seniors.



It enables generation of automated reports on activities of daily living, with requisite customization.



Integration with wearables & devices and support and concierge service providers are available for holistic care and management

Contact

For more information on TCS Seniors Lab, please email apac.marketing@tcs.com

About Tata Consultancy Services (TCS)

Tata Consultancy Services is a purpose-led transformation partner to many of the world's largest businesses. For more than 50 years, it has been collaborating with clients and communities to build a greater future through innovation and collective knowledge. TCS offers an integrated portfolio of cognitive powered business, technology, and engineering services and solutions. The company's 469,000 consultants in 46 countries help empower individuals, enterprises, and societies to build on belief.

Visit www.tcs.com and follow TCS news at [@TCS_News](https://twitter.com/TCS_News).

All content / information present here is the exclusive property of Tata Consultancy Services Limited (TCS). The content / information contained here is correct at the time of publishing. No material from here may be copied, modified, reproduced, republished, uploaded, transmitted, posted or distributed in any form without prior written permission from TCS. Unauthorized use of the content / information appearing here may violate copyright, trademark and other applicable laws, and could result in criminal or civil penalties.